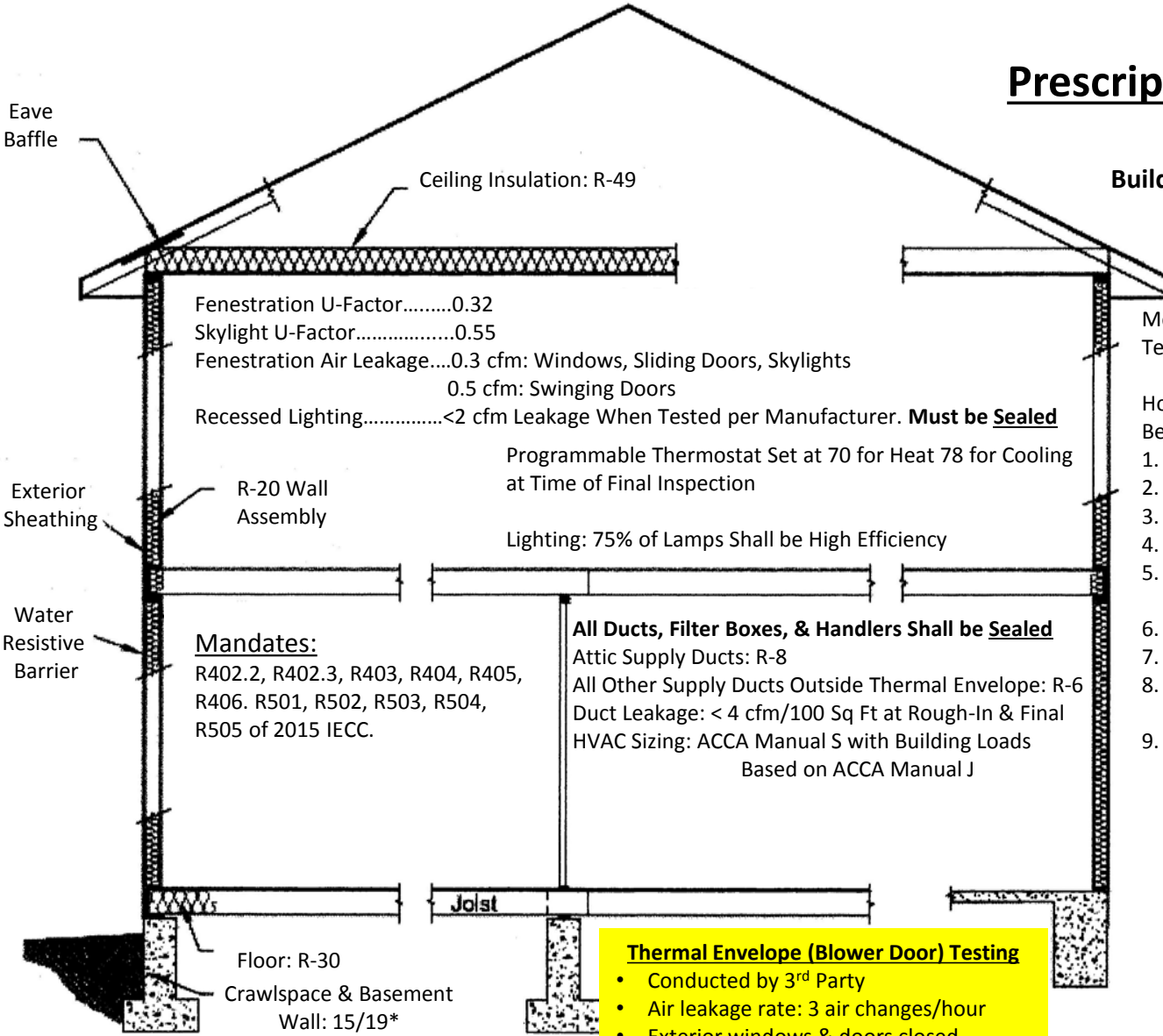


Prescriptive Energy Compliance

City of Grinnell

Building and Planning Department

520 4th Avenue
Grinnell, IA 50112
Phone: 641-236-2600



Mechanical Piping Insulation Required when Fluid Temperatures are < 55°F or > 105°F

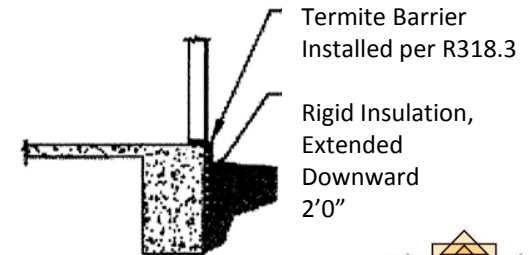
Hot Water Pipe Insulation of R-3 or Greater Shall Be applied to the Following:

1. ¾ inch Pipe or Greater in Diameter
2. Piping serving 2+ Dwelling Units
3. Piping from Water Heater to Kitchen Outlets
4. Piping Outside Conditioned Space
5. Piping from Water Heater to Distribution Manifold
6. Piping Under Floor Slab
7. Buried Piping
8. Supply/Return Piping in Recirculation Systems
9. Piping with Run Lengths Greater then the Maximum Run Length for the Following:

Diameter (in)	Run Length (ft)
3/8	30
1/2	20
3/4	10
1	5

Thermal Envelope (Blower Door) Testing

- Conducted by 3rd Party
- Air leakage rate: 3 air changes/hour
- Exterior windows & doors closed
- All dampers closed
- Interior doors open
- HVAC system off
- Supply & Return registers: fully open



REQUIRED

*15/19 means R-15 continuous insulation on the interior or exterior of the home or R-19 cavity insulations at the interior of the Basement wall. 15/19 shall be permitted to be met with R-13 cavity insulation on the interior and R-5 continuous insulation on the interior or exterior of home.